

## B-RAF

**Catalog Number:** 26129

**Gene Symbol:** BRAF, BRAF1, RAFB1

**Description:** Anti-B-Raf Rabbit Polyclonal Antibody

**Background:** B-Raf is a member of the Raf family of Ser/Thr protein kinases. It functions downstream of Ras to regulate the MAP kinase signaling pathway. Mutations in the B-RAF gene cause diseases. Inherited mutations in B-RAF cause cardiofaciocutaneous syndrome. Acquired mutations in B-RAF have been found in cancers.

**Immunogen:** Purified B-Raf protein, human origin.

**Tested Applications:** ELISA, WB, IF, IHC

**Recommended Dilutions:**

ELISA: 1:1000-1:5000

WB: 1:100-1:1000

IHC: 1:50-1:100

**Concentration:** 0.1 mg/ml

**Host:** Rabbit

**Clonality:** Polyclonal

**Purity:** Purified from serum

**Format:** Liquid

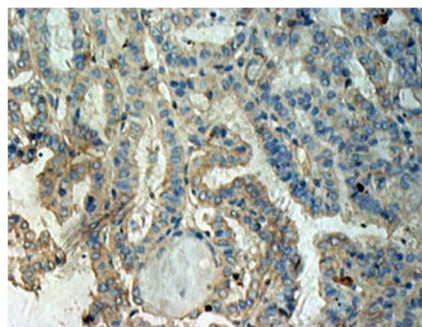
**Preservative:** No

**Constituents:** PBS (without Mg<sup>2+</sup> and Ca<sup>2+</sup>), pH7.4, 150 mM NaCl, 50% glycerol

**Species Reactivity:** Recognizes B-Raf of vertebrates.

**Storage Conditions:** Store at -20°C. Avoid freeze / thaw cycles.

### Immunohistochemistry:



### Immunohistochemical analysis of paraffin-embedded human thyroid cancer tissue with anti-B-Raf polyclonal antibody (Cat. # 21271).

Tissue samples were fixed with formaldehyde and blocked with 1% serum for 15 min at 37 °C. Antigen retrieval was by heat mediation in citrate buffer (pH6). Samples were then incubated with primary antibody (1:50 dilution) overnight at 4°C. HRP-conjugated Goat anti-mouse IgG (1:50 dilution) was used as secondary antibody

FOR RESEARCH USE ONLY. NOT FOR DIAGNOSTIC APPLICATIONS